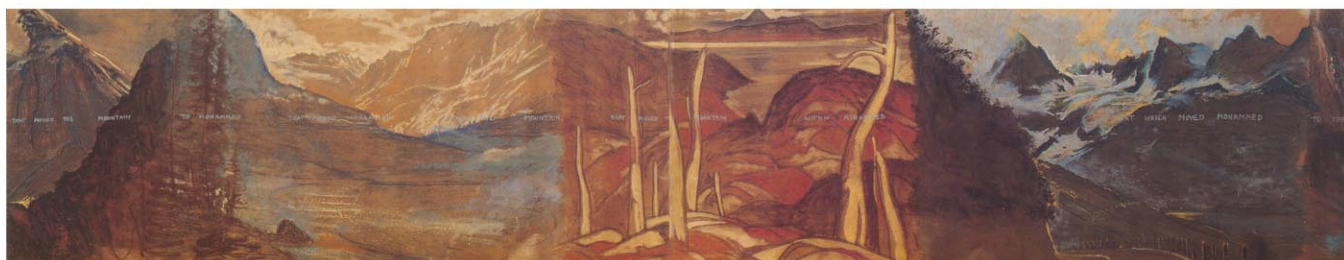


The Mohammed Mountain Question: an Extended Drawing

by Allan Harding MacKay

April 29 -June 25, 1995

The exhibition *The Mohammed Mountain Question* is based on a single work of art. The 1.5-metre-tall panoramic painting/drawing wraps its 35-metre length around three walls of the Gallery, engulfing the viewer in a mountain landscape.



Researched in 1987 while MacKay was working in The Banff Centre's Leighton Artist Colony studios, the drawing was completed in Switzerland and combines the mountains of the Canadian Rockies with the Swiss Alps, where he was living at the time. This drawing is part of MacKay's long investigation of landscape painting, figurative themes, and dialogue with self

The Mohammed Mountain Question elaborates on MacKay's obsession with mountains and an individual's place within them - referring stylistically to the landscape paintings of Hodler and the Canadian Group of Seven. The poetic, philosophical questions asked within the text of the drawing are as monumental in scale as the drawing itself and as the mountains of the Rockies and the Swiss Alps. Written in Halifax in the 1970s before MacKay had ever seen a mountain, the text brings together all the different mountain references from the *I Ching*, as well as the concept of Mohammed and the mountain. Along the perimeter of the drawing the phrase "irony gathering rust" appears, indicating MacKay's sincere interest in landscape and the powerful emotions and experiences landscape can evoke.

Above detail from

"The Mohammed Mountain Question: an Extended Drawing."

From the collection of the University of Lethbridge Art Gallery, gift of the artist.